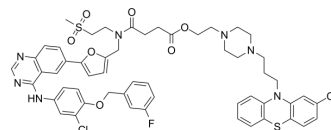


EGFR/CSC-IN-1

Cat. No.:	HY-132883
CAS No.:	2820447-02-5
Molecular Formula:	C ₅₄ H ₅₄ Cl ₂ FN ₇ O ₇ S ₂
Molecular Weight:	1067.08
Target:	EGFR
Pathway:	JAK/STAT Signaling; Protein Tyrosine Kinase/RTK
Storage:	Please store the product under the recommended conditions in the Certificate of Analysis.



BIOLOGICAL ACTIVITY

Description	EGFR/CSC-IN-1 is a potential EGFR (IC ₅₀ 10.52 nM) and cancer stem cell (CSC) dual inhibitor for triple-negative breast cancer research.
IC ₅₀ & Target	EGFR 10.52 nM (IC ₅₀)

REFERENCES

[1]. Wang Y, et al. Conjugates Derived from Lapatinib Derivatives with Cancer Cell Stemness Inhibitors Effectively Reversed Drug Resistance in Triple-Negative Breast Cancer. *J Med Chem.* 2021 Sep 9;64(17):12877-12892.

Caution: Product has not been fully validated for medical applications. For research use only.

Tel: 609-228-6898

Fax: 609-228-5909

E-mail: tech@MedChemExpress.com

Address: 1 Deer Park Dr, Suite Q, Monmouth Junction, NJ 08852, USA