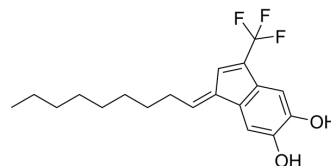


(E/Z)-E64FC26

Cat. No.:	HY-122895A		
CAS No.:	2285446-67-3		
Molecular Formula:	C ₁₉ H ₂₃ F ₃ O ₂		
Molecular Weight:	340.38		
Target:	Apoptosis; PDI		
Pathway:	Apoptosis; Cell Cycle/DNA Damage; Metabolic Enzyme/Protease		
Storage:	Powder	-20°C	3 years
		4°C	2 years
	In solvent	-80°C	6 months
		-20°C	1 month



SOLVENT & SOLUBILITY

In Vitro	DMSO : 100 mg/mL (293.79 mM; Need ultrasonic)				
		Solvent Concentration	Mass 1 mg	5 mg	10 mg
	Preparing Stock Solutions	1 mM	2.9379 mL	14.6895 mL	29.3789 mL
		5 mM	0.5876 mL	2.9379 mL	5.8758 mL
10 mM		0.2938 mL	1.4689 mL	2.9379 mL	
Please refer to the solubility information to select the appropriate solvent.					
In Vivo	1. Add each solvent one by one: 10% DMSO >> 90% (20% SBE-β-CD in saline) Solubility: 2.5 mg/mL (7.34 mM); Suspended solution; Need ultrasonic				

BIOLOGICAL ACTIVITY

Description	(E/Z)-E64FC26 is a mixture complex of E-E64FC26 and Z-E64FC26. E64FC26 (E-E64FC26) is a potent pan-inhibitor of the protein disulfide isomerase (PDI) family, with IC ₅₀ s of 1.9, 20.9, 25.9, 16.3, and 25.4 μM against PDIA1, PDIA3, PDIA4, TXNDC5, and PDIA6. E64FC26 shows anti-myeloma activity ^{[1][2]} .
IC₅₀ & Target	PDI, Apoptosis ^{[1][2]}

REFERENCES

[1]. Nathan G. Dolloff, et al. Indene derivatives and uses thereof. US20190062298A1.

Caution: Product has not been fully validated for medical applications. For research use only.

Tel: 609-228-6898

Fax: 609-228-5909

E-mail: tech@MedChemExpress.com

Address: 1 Deer Park Dr, Suite Q, Monmouth Junction, NJ 08852, USA