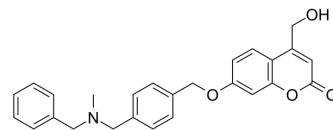


Dual AChE-MAO B-IN-2

Cat. No.:	HY-145708
CAS No.:	1801157-64-1
Molecular Formula:	C ₂₆ H ₂₅ NO ₄
Molecular Weight:	415.48
Target:	AChE; Monoamine Oxidase
Pathway:	Neuronal Signaling
Storage:	Please store the product under the recommended conditions in the Certificate of Analysis.



BIOLOGICAL ACTIVITY

Description	Dual AChE-MAO B-IN-2 is a potent AChE and MAO B dual inhibitor with IC ₅₀ s of 0.12 μM and 0.01 μM for b>AChE and MAO B, respectively. Dual AChE-MAO B-IN-2 has the potential for the research of Alzheimer's disease ^[1] .
IC₅₀ & Target	MAO-B 4.5 μM (Ki)
In Vitro	Dual AChE-MAO B-IN-2 (compound 1) shows a +5.5 °C increase in the MAO B enzyme T _m value ^[1] . MCE has not independently confirmed the accuracy of these methods. They are for reference only.

REFERENCES

[1]. Ekström F, et al. Dual Reversible Coumarin Inhibitors Mutually Bound to Monoamine Oxidase B and Acetylcholinesterase Crystal Structures. ACS Med Chem Lett. 2022, 13(3):499-506.

Caution: Product has not been fully validated for medical applications. For research use only.

Tel: 609-228-6898

Fax: 609-228-5909

E-mail: tech@MedChemExpress.com

Address: 1 Deer Park Dr, Suite Q, Monmouth Junction, NJ 08852, USA