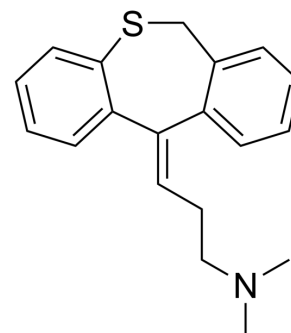


Dothiepin

Cat. No.:	HY-12394
CAS No.:	113-53-1
Molecular Formula:	C ₁₉ H ₂₁ NS
Molecular Weight:	295.44
Target:	Histamine Receptor; 5-HT Receptor
Pathway:	GPCR/G Protein; Immunology/Inflammation; Neuronal Signaling
Storage:	Please store the product under the recommended conditions in the Certificate of Analysis.



BIOLOGICAL ACTIVITY

Description	Dothiepin (Dosulepin; Dothep) is an antidepressant agent with sedative/anxiolytic activity. Dothiepin is an inhibitor preferring of noradrenaline uptake than serotonin uptake. Dothiepin facilitates noradrenergic neurotransmission via inhibiting the neuronal uptake. Dothiepin is also an antagonist of histamine H1-receptor without cardiotoxicity. Dothiepin exhibits significant analgesic activity in psychogenic facial pain, idiopathic fibromyalgia syndrome or rheumatoid arthritis ^[1] .
IC ₅₀ & Target	Histamine H1-receptor, Noradrenaline uptake (α 1- and α 2-adrenoceptors and serotonin 5HT1 and 5HT2-receptors) ^[1]

REFERENCES

[1]. Lancaster SG, et al. Dothiepin. A review of its pharmacodynamic and pharmacokinetic properties, and therapeutic efficacy in depressive illness. *Drugs*. 1989 Jul;38(1):123-47.

Caution: Product has not been fully validated for medical applications. For research use only.

Tel: 609-228-6898

Fax: 609-228-5909

E-mail: tech@MedChemExpress.com

Address: 1 Deer Park Dr, Suite Q, Monmouth Junction, NJ 08852, USA