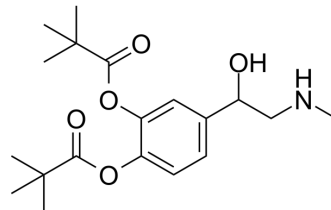


## Dipivefrin

Cat. No.:	HY-121398
CAS No.:	52365-63-6
Molecular Formula:	C <sub>19</sub> H <sub>29</sub> NO <sub>5</sub>
Molecular Weight:	351.44
Target:	Endogenous Metabolite; Adrenergic Receptor
Pathway:	Metabolic Enzyme/Protease; GPCR/G Protein; Neuronal Signaling
Storage:	Please store the product under the recommended conditions in the Certificate of Analysis.



### BIOLOGICAL ACTIVITY

#### Description

Dipivefrin is a potent adrenergic agonist. Dipivefrin is an adrenergic pro-agent. Dipivefrin can be used for reduce IOP (intraocular pressure) in patients suffering from chronic open angle glaucoma<sup>[1][2]</sup>.

### REFERENCES

[1]. Kass MA, et al. Dipivefrin and epinephrine treatment of elevated intraocular pressure: a comparative study. Arch Ophthalmol. 1979 Oct;97(10):1865-6.

[2]. Alkholief M, et al. Thermoresponsive sol-gel improves ocular bioavailability of Dipivefrin hydrochloride and potentially reduces the elevated intraocular pressure in vivo. Saudi Pharm J. 2020 Aug;28(8):1019-1029.

**Caution: Product has not been fully validated for medical applications. For research use only.**

Tel: 609-228-6898

Fax: 609-228-5909

E-mail: tech@MedChemExpress.com

Address: 1 Deer Park Dr, Suite Q, Monmouth Junction, NJ 08852, USA