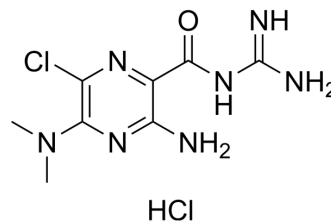


## Dimethylamiloride hydrochloride

Cat. No.:	HY-132181
CAS No.:	2235-97-4
Molecular Formula:	C <sub>8</sub> H <sub>13</sub> Cl <sub>2</sub> N <sub>7</sub> O
Molecular Weight:	294.14
Target:	Na <sup>+</sup> /H <sup>+</sup> Exchanger (NHE)
Pathway:	Membrane Transporter/Ion Channel
Storage:	Please store the product under the recommended conditions in the Certificate of Analysis.



### BIOLOGICAL ACTIVITY

#### Description

Dimethylamiloride hydrochloride is a Na<sup>+</sup>/H<sup>+</sup> exchanger NHE inhibitor with K<sub>i</sub> values of 0.02, 0.25, and 14 μM for NHE1, NHE2, and NHE3, respectively. Dimethylamiloride hydrochloride can be used for pain research<sup>[1]</sup>.

### REFERENCES

[1]. Masereel B, et al. An overview of inhibitors of Na(+)/H(+) exchanger. Eur J Med Chem. 2003 Jun;38(6):547-54.

**Caution: Product has not been fully validated for medical applications. For research use only.**

Tel: 609-228-6898

Fax: 609-228-5909

E-mail: tech@MedChemExpress.com

Address: 1 Deer Park Dr, Suite Q, Monmouth Junction, NJ 08852, USA