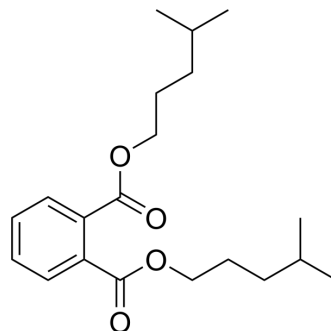


## Diisohexyl phthalate

Cat. No.:	HY-135357
CAS No.:	71850-09-4
Molecular Formula:	C <sub>20</sub> H <sub>30</sub> O <sub>4</sub>
Molecular Weight:	334.45
Target:	Biochemical Assay Reagents
Pathway:	Others
Storage:	4°C, protect from light * In solvent : -80°C, 6 months; -20°C, 1 month (protect from light)



### SOLVENT & SOLUBILITY

In Vitro	DMSO : 200 mg/mL (598.00 mM; Need ultrasonic)					
		Solvent Concentration	Mass	1 mg	5 mg	10 mg
	Preparing Stock Solutions	1 mM	2.9900 mL	14.9499 mL	29.8998 mL	
		5 mM	0.5980 mL	2.9900 mL	5.9800 mL	
		10 mM	0.2990 mL	1.4950 mL	2.9900 mL	
Please refer to the solubility information to select the appropriate solvent.						
In Vivo	1. Add each solvent one by one: 10% DMSO >> 40% PEG300 >> 5% Tween-80 >> 45% saline Solubility: 5 mg/mL (14.95 mM); Clear solution; Need ultrasonic					
	2. Add each solvent one by one: 10% DMSO >> 90% corn oil Solubility: 5 mg/mL (14.95 mM); Clear solution; Need ultrasonic					
	3. Add each solvent one by one: 10% DMSO >> 90% (20% SBE-β-CD in saline) Solubility: ≥ 2.5 mg/mL (7.47 mM); Clear solution					

### BIOLOGICAL ACTIVITY

Description	Diisohexyl phthalate is a class of dialkyl phthalate esters and a plasticizer <sup>[1][2]</sup> .
-------------	---

### REFERENCES

- [1]. Medeiros AM, et al. Evaluation of skin sensitization response of dialkyl (C6-C13) phthalate esters. Contact Dermatitis. 1999 Nov;41(5):287-9.
- [2]. Ying-Sing Fung, et al. Liquid chromatographic determination of the plasticizer di(2-ethylhexyl) phthalate (DEHP) in PVC plastics. Fresenius' Journal of Analytical

**Caution: Product has not been fully validated for medical applications. For research use only.**

Tel: 609-228-6898

Fax: 609-228-5909

E-mail: [tech@MedChemExpress.com](mailto:tech@MedChemExpress.com)

Address: 1 Deer Park Dr, Suite Q, Monmouth Junction, NJ 08852, USA