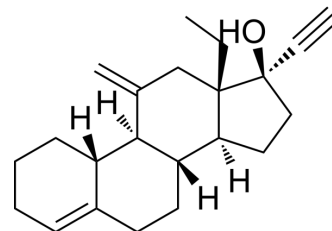


## Desogestrel

<b>Cat. No.:</b>	HY-12516		
<b>CAS No.:</b>	54024-22-5		
<b>Molecular Formula:</b>	C <sub>22</sub> H <sub>30</sub> O		
<b>Molecular Weight:</b>	310.47		
<b>Target:</b>	Progesterone Receptor		
<b>Pathway:</b>	Vitamin D Related/Nuclear Receptor		
<b>Storage:</b>	Powder	-20°C	3 years
		4°C	2 years
	In solvent	-80°C	2 years
		-20°C	1 year



### SOLVENT & SOLUBILITY

#### In Vitro

DMSO : 16.67 mg/mL (53.69 mM; Need ultrasonic)

Concentration	Solvent	Mass		
		1 mg	5 mg	10 mg
Preparing Stock Solutions	1 mM	3.2209 mL	16.1046 mL	32.2092 mL
	5 mM	0.6442 mL	3.2209 mL	6.4418 mL
	10 mM	0.3221 mL	1.6105 mL	3.2209 mL

Please refer to the solubility information to select the appropriate solvent.

#### In Vivo

- Add each solvent one by one: 10% DMSO >> 40% PEG300 >> 5% Tween-80 >> 45% saline  
Solubility: ≥ 1.67 mg/mL (5.38 mM); Clear solution
- Add each solvent one by one: 10% DMSO >> 90% (20% SBE-β-CD in saline)  
Solubility: ≥ 1.67 mg/mL (5.38 mM); Clear solution
- Add each solvent one by one: 10% DMSO >> 90% corn oil  
Solubility: ≥ 1.67 mg/mL (5.38 mM); Clear solution

### BIOLOGICAL ACTIVITY

#### Description

Desogestrel (Org-2969) is a third-generation progesterone analogue contained in many oral contraceptive preparations. Desogestrel is a click chemistry reagent, it contains an Alkyne group and can undergo copper-catalyzed azide-alkyne cycloaddition (CuAAC) with molecules containing Azide groups.

### CUSTOMER VALIDATION

- 
- Research Square Preprint. 2020 Nov 4;rs.3.rs-100914.

See more customer validations on [www.MedChemExpress.com](http://www.MedChemExpress.com)

## REFERENCES

---

[1]. Gassen DT, et al. Evaluation of hormonal suppression with two contraceptive regimens using ethinyl estradiol and desogestrel. Arch Gynecol Obstet. 2013 Feb;287(2):289-94.

---

**Caution: Product has not been fully validated for medical applications. For research use only.**

Tel: 609-228-6898

Fax: 609-228-5909

E-mail: [tech@MedChemExpress.com](mailto:tech@MedChemExpress.com)

Address: 1 Deer Park Dr, Suite Q, Monmouth Junction, NJ 08852, USA