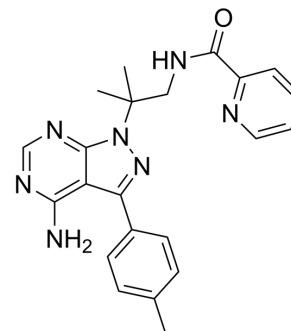


Desmethyl-WEHI-345 analog

Cat. No.:	HY-141453
CAS No.:	1354825-03-8
Molecular Formula:	C ₂₂ H ₂₃ N ₇ O
Molecular Weight:	401.46
Target:	RIP kinase
Pathway:	Apoptosis
Storage:	Please store the product under the recommended conditions in the Certificate of Analysis.



BIOLOGICAL ACTIVITY

Description	Desmethyl-WEHI-345 analog is a protein kinase inhibitor extracted from patent WO2012003544A1, example 12. Desmethyl-WEHI-345 analog can be used for the research of colon cancer ^[1] .
IC ₅₀ & Target	protein kinase ^[1]
In Vitro	Desmethyl-WEHI-345 analog inhibits cells growth of LIM 1215, LIM2537, RasNIH3T3 and LIM 1899 cells ^[1] . MCE has not independently confirmed the accuracy of these methods. They are for reference only.

REFERENCES

[1]. Baell JB, et, al. Protein kinase inhibitors and methods of treatment. WO2012003544A1.

Caution: Product has not been fully validated for medical applications. For research use only.

Tel: 609-228-6898

Fax: 609-228-5909

E-mail: tech@MedChemExpress.com

Address: 1 Deer Park Dr, Suite Q, Monmouth Junction, NJ 08852, USA