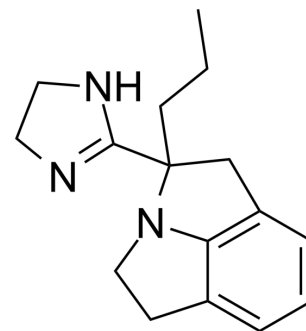


Derigidole

| | |
|--------------------|---|
| Cat. No.: | HY-101683 |
| CAS No.: | 122830-14-2 |
| Molecular Formula: | C ₁₆ H ₂₁ N ₃ |
| Molecular Weight: | 255.36 |
| Target: | Adrenergic Receptor |
| Pathway: | GPCR/G Protein; Neuronal Signaling |
| Storage: | Please store the product under the recommended conditions in the Certificate of Analysis. |



BIOLOGICAL ACTIVITY

| | |
|---------------------------|---|
| Description | Derigidole is a peripheral adrenoceptor antagonist with a high affinity for α_2 -adrenoceptors. |
| IC ₅₀ & Target | Adrenoceptor ^[1] |
| In Vitro | Derigidole is a selective α_2 -receptor inhibitor. Derigidole inhibits [³ H]Clonidine and [³ H]Idazoxan but not [³ H]Prazosin binding to rat cortical and human platelet α_2 -adrenoceptors and is more selective than Idazoxan for peripheral receptors ^[1] . MCE has not independently confirmed the accuracy of these methods. They are for reference only. |

REFERENCES

[1]. Natali A, et al. Effects of acute alpha 2-blockade on insulin action and secretion in humans. Am J Physiol. 1998 Jan;274(1 Pt 1):E57-64.

Caution: Product has not been fully validated for medical applications. For research use only.

Tel: 609-228-6898

Fax: 609-228-5909

E-mail: tech@MedChemExpress.com

Address: 1 Deer Park Dr, Suite Q, Monmouth Junction, NJ 08852, USA