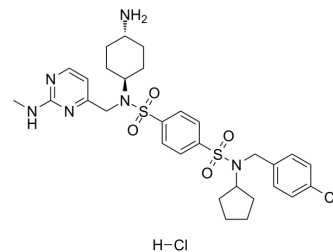


## Deltasonamide 2 hydrochloride

Cat. No.:	HY-122641C
CAS No.:	2448341-55-5
Molecular Formula:	C <sub>30</sub> H <sub>40</sub> Cl <sub>2</sub> N <sub>6</sub> O <sub>4</sub> S <sub>2</sub>
Molecular Weight:	683.71
Target:	Phosphodiesterase (PDE)
Pathway:	Metabolic Enzyme/Protease
Storage:	4°C, sealed storage, away from moisture * In solvent : -80°C, 6 months; -20°C, 1 month (sealed storage, away from moisture)



### SOLVENT & SOLUBILITY

#### In Vitro

DMSO : 150 mg/mL (219.39 mM; Need ultrasonic)  
H<sub>2</sub>O : < 0.1 mg/mL (ultrasonic;warming;heat to 60°C) (insoluble)

Preparing Stock Solutions	Solvent Concentration	Mass	1 mg	5 mg	10 mg
		1 mM	1.4626 mL	7.3130 mL	14.6261 mL
	5 mM	0.2925 mL	1.4626 mL	2.9252 mL	
	10 mM	0.1463 mL	0.7313 mL	1.4626 mL	

Please refer to the solubility information to select the appropriate solvent.

### BIOLOGICAL ACTIVITY

#### Description

Deltasonamide 2 hydrochloride is a competitive, high affinity PDE $\delta$  inhibitor with a K<sub>d</sub> of ~385 pM<sup>[1]</sup>.

#### IC<sub>50</sub> & Target

Kd: ~385 pM (PDE $\delta$ )<sup>[1]</sup>

### CUSTOMER VALIDATION

- J Med Chem. 2021 Dec 29.

See more customer validations on [www.MedChemExpress.com](http://www.MedChemExpress.com)

### REFERENCES

---

[1]. Klein CH, et al. PDE $\delta$  inhibition impedes the proliferation and survival of human colorectal cancer cell lines harboring oncogenic KRas. Int J Cancer. 2019 Feb 15;144(4):767-776.

---

**Caution: Product has not been fully validated for medical applications. For research use only.**

Tel: 609-228-6898

Fax: 609-228-5909

E-mail: [tech@MedChemExpress.com](mailto:tech@MedChemExpress.com)

Address: 1 Deer Park Dr, Suite Q, Monmouth Junction, NJ 08852, USA