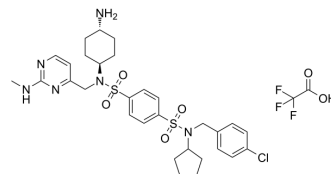


## Deltasonamide 2 (TFA)

<b>Cat. No.:</b>	HY-122641B
<b>CAS No.:</b>	2235358-74-2
<b>Molecular Formula:</b>	C <sub>32</sub> H <sub>40</sub> ClF <sub>3</sub> N <sub>6</sub> O <sub>6</sub> S <sub>2</sub>
<b>Molecular Weight:</b>	761.27
<b>Target:</b>	Phosphodiesterase (PDE)
<b>Pathway:</b>	Metabolic Enzyme/Protease
<b>Storage:</b>	4°C, sealed storage, away from moisture * In solvent : -80°C, 6 months; -20°C, 1 month (sealed storage, away from moisture)



### SOLVENT & SOLUBILITY

<b>In Vitro</b>	DMSO : 125 mg/mL (164.20 mM; Need ultrasonic)				
		Solvent Concentration	Mass		
	<b>Preparing Stock Solutions</b>		<b>1 mg</b>	<b>5 mg</b>	<b>10 mg</b>
		<b>1 mM</b>	1.3136 mL	6.5680 mL	13.1359 mL
		<b>5 mM</b>	0.2627 mL	1.3136 mL	2.6272 mL
<b>10 mM</b>	0.1314 mL	0.6568 mL	1.3136 mL		
Please refer to the solubility information to select the appropriate solvent.					
<b>In Vivo</b>	1. Add each solvent one by one: 10% DMSO >> 40% PEG300 >> 5% Tween-80 >> 45% saline Solubility: ≥ 2.08 mg/mL (2.73 mM); Clear solution  2. Add each solvent one by one: 10% DMSO >> 90% corn oil Solubility: ≥ 2.08 mg/mL (2.73 mM); Clear solution				

### BIOLOGICAL ACTIVITY

<b>Description</b>	Deltasonamide 2 TFA is competitive, high affinity PDEδ inhibitor with a K <sub>d</sub> of ~385 pM <sup>[1]</sup> .
<b>IC<sub>50</sub> &amp; Target</b>	K <sub>d</sub> : ~385 pM (PDEδ) <sup>[1]</sup>

### CUSTOMER VALIDATION

- J Med Chem. 2021 Dec 29.

See more customer validations on [www.MedChemExpress.com](http://www.MedChemExpress.com)

---

## REFERENCES

[1]. Klein CH, et al. PDE $\delta$  inhibition impedes the proliferation and survival of human colorectal cancer cell lines harboring oncogenic KRas. Int J Cancer. 2019 Feb 15;144(4):767-776.

---

**Caution: Product has not been fully validated for medical applications. For research use only.**

Tel: 609-228-6898

Fax: 609-228-5909

E-mail: [tech@MedChemExpress.com](mailto:tech@MedChemExpress.com)

Address: 1 Deer Park Dr, Suite Q, Monmouth Junction, NJ 08852, USA