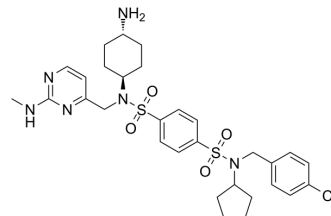


Deltasonamide 2

Cat. No.:	HY-122641A
CAS No.:	2088485-34-9
Molecular Formula:	C ₃₀ H ₃₉ ClN ₆ O ₄ S ₂
Molecular Weight:	647.25
Target:	Phosphodiesterase (PDE)
Pathway:	Metabolic Enzyme/Protease
Storage:	Please store the product under the recommended conditions in the Certificate of Analysis.



BIOLOGICAL ACTIVITY

Description	Deltasonamide 2 is a competitive, high affinity PDE δ inhibitor with a K _d of ~385 pM ^[1] .
IC ₅₀ & Target	Kd: ~385 pM (PDE δ) ^[1]

CUSTOMER VALIDATION

- J Med Chem. 2021 Dec 29.

See more customer validations on www.MedChemExpress.com

REFERENCES

[1]. Klein CH, et al. PDE δ inhibition impedes the proliferation and survival of human colorectal cancer cell lines harboring oncogenic KRas. Int J Cancer. 2019 Feb 15;144(4):767-776.

Caution: Product has not been fully validated for medical applications. For research use only.

Tel: 609-228-6898

Fax: 609-228-5909

E-mail: tech@MedChemExpress.com

Address: 1 Deer Park Dr, Suite Q, Monmouth Junction, NJ 08852, USA