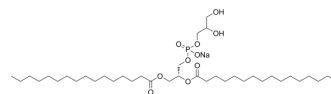


## DPPG sodium

Cat. No.:	HY-125940
CAS No.:	200880-41-7
Molecular Formula:	C <sub>38</sub> H <sub>74</sub> NaO <sub>10</sub> P
Molecular Weight:	744.95
Target:	Liposome
Pathway:	Metabolic Enzyme/Protease
Storage:	-20°C, sealed storage, away from moisture * In solvent : -80°C, 6 months; -20°C, 1 month (sealed storage, away from moisture)



### SOLVENT & SOLUBILITY

#### In Vitro

H<sub>2</sub>O : 8.33 mg/mL (11.18 mM; ultrasonic and warming and heat to 60°C)

Solvent	Mass	Concentration		
		1 mg	5 mg	10 mg
Preparing Stock Solutions	1 mM	1.3424 mL	6.7119 mL	13.4237 mL
	5 mM	0.2685 mL	1.3424 mL	2.6847 mL
	10 mM	0.1342 mL	0.6712 mL	1.3424 mL

Please refer to the solubility information to select the appropriate solvent.

### BIOLOGICAL ACTIVITY

#### Description

DPPG sodium (1,2-Dipalmitoyl-sn-glycero-3-PG sodium) is a phospholipid containing the long-chain(16:0) palmitic acid inserted at the sn-1 and sn-2 positions. DPPG sodium is used in the generation of micelles, liposomes and other types of artificial membranes<sup>[1]</sup>.

### REFERENCES

[1]. Ege C, Lee KY. Insertion of Alzheimer's A beta 40 peptide into lipid monolayers. Biophys J. 2004 Sep;87(3):1732-40.

**Caution: Product has not been fully validated for medical applications. For research use only.**

Tel: 609-228-6898

Fax: 609-228-5909

E-mail: tech@MedChemExpress.com

Address: 1 Deer Park Dr, Suite Q, Monmouth Junction, NJ 08852, USA