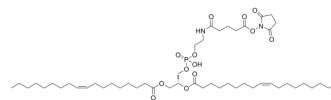


## DOPE-NHS

Cat. No.:	HY-150241
CAS No.:	1010188-79-0
Molecular Formula:	C <sub>50</sub> H <sub>87</sub> N <sub>2</sub> O <sub>13</sub> P
Molecular Weight:	955.21
Target:	Liposome
Pathway:	Metabolic Enzyme/Protease
Storage:	Please store the product under the recommended conditions in the Certificate of Analysis.



## BIOLOGICAL ACTIVITY

### Description

DOPE-NHS is a linker. DOPE-NHS can be used for peptides to be conjugated to exosomes and possibly other membrane-based nanoparticles. DOPE-NHS can be used for drug delivery<sup>[1]</sup>.

## REFERENCES

[1]. Cui GH, et al. RVG-modified exosomes derived from mesenchymal stem cells rescue memory deficits by regulating inflammatory responses in a mouse model of Alzheimer's disease. *Immun Ageing*. 2019 May 13;16:10.

**Caution: Product has not been fully validated for medical applications. For research use only.**

Tel: 609-228-6898

Fax: 609-228-5909

E-mail: tech@MedChemExpress.com

Address: 1 Deer Park Dr, Suite Q, Monmouth Junction, NJ 08852, USA