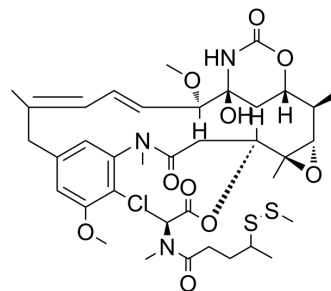


## DM3-SMe

Cat. No.:	HY-130081
CAS No.:	796073-70-6
Molecular Formula:	C <sub>38</sub> H <sub>54</sub> ClN <sub>3</sub> O <sub>10</sub> S <sub>2</sub>
Molecular Weight:	812.43
Target:	ADC Cytotoxin; Microtubule/Tubulin
Pathway:	Antibody-drug Conjugate/ADC Related; Cell Cycle/DNA Damage; Cytoskeleton
Storage:	Please store the product under the recommended conditions in the Certificate of Analysis.



### BIOLOGICAL ACTIVITY

Description	DM3-SMe is a maytansine derivative and a tubulin inhibitor, and is a cytotoxic moiety of antibody-drug conjugates (ADCs), which can be linked to antibody through disulfide bond or stable thioether bond. DM3-SMe shows highly cytotoxic activity in vitro with an IC <sub>50</sub> of 0.0011 nM <sup>[1][2]</sup> .
IC <sub>50</sub> & Target	Maytansinoids

### REFERENCES

- [1]. Chen H, et al. Tubulin Inhibitor-Based Antibody-Drug Conjugates for Cancer Therapy. *Molecules*. 2017 Aug 1;22(8).
- [2]. Yuliang Zhao et al. *Biomedical Nanomaterials*. 2016-Science.

**Caution: Product has not been fully validated for medical applications. For research use only.**

Tel: 609-228-6898

Fax: 609-228-5909

E-mail: tech@MedChemExpress.com

Address: 1 Deer Park Dr, Suite Q, Monmouth Junction, NJ 08852, USA