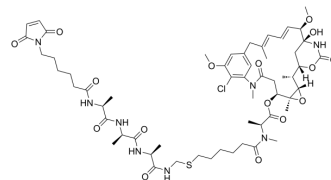


DM21

Cat. No.:	HY-139441		
CAS No.:	2243689-80-5		
Molecular Formula:	C ₅₈ H ₈₃ ClN ₈ O ₁₆ S		
Molecular Weight:	1215.84		
Target:	Drug-Linker Conjugates for ADC		
Pathway:	Antibody-drug Conjugate/ADC Related		
Storage:	Powder	-20°C	3 years
	In solvent	-80°C	6 months
		-20°C	1 month



SOLVENT & SOLUBILITY

In Vitro

DMSO : 100 mg/mL (82.25 mM; Need ultrasonic)

Concentration	Mass		
	1 mg	5 mg	10 mg
1 mM	0.8225 mL	4.1124 mL	8.2248 mL
5 mM	0.1645 mL	0.8225 mL	1.6450 mL
10 mM	0.0822 mL	0.4112 mL	0.8225 mL

Please refer to the solubility information to select the appropriate solvent.

In Vivo

- Add each solvent one by one: 10% DMSO >> 40% PEG300 >> 5% Tween-80 >> 45% saline
Solubility: ≥ 0.83 mg/mL (0.68 mM); Clear solution
- Add each solvent one by one: 10% DMSO >> 90% (20% SBE-β-CD in saline)
Solubility: ≥ 0.83 mg/mL (0.68 mM); Clear solution
- Add each solvent one by one: 10% DMSO >> 90% corn oil
Solubility: ≥ 0.83 mg/mL (0.68 mM); Clear solution

BIOLOGICAL ACTIVITY

Description

DM21 is a conjugate of a cleavable ADC agent and a linker (ADC linker) used in the synthesis of antibody-drug conjugates (ADCs)^[1].

In Vitro

ADCs are comprised of an antibody to which is attached an ADC cytotoxin through an ADC linker. MCE has not independently confirmed the accuracy of these methods. They are for reference only.

REFERENCES

Caution: Product has not been fully validated for medical applications. For research use only.

Tel: 609-228-6898

Fax: 609-228-5909

E-mail: tech@MedChemExpress.com

Address: 1 Deer Park Dr, Suite Q, Monmouth Junction, NJ 08852, USA