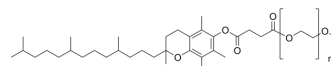


DL-alpha-Tocopherol methoxypolyethylene glycol succinate

Cat. No.:	HY-114362
CAS No.:	1309573-60-1
Molecular Formula:	$(C_2H_4O)_n C_{34}H_{56}O_5$
Target:	Biochemical Assay Reagents
Pathway:	Others
Storage:	Solution, -20°C, 2 years



SOLVENT & SOLUBILITY

In Vitro	H ₂ O : ≥ 50 mg/mL * "≥" means soluble, but saturation unknown.
In Vivo	1. Add each solvent one by one: PBS Solubility: 25 mg/mL (Infinity mM); Clear solution; Need ultrasonic and warming

BIOLOGICAL ACTIVITY

Description	DL-alpha-Tocopherol methoxypolyethylene glycol succinate solution (TPGS-750-M) is an amphiphile, acts as a surfactant ^[1] .
-------------	--

REFERENCES

[1]. Lipshutz BH, et al. TPGS-750-M: a second-generation amphiphile for metal-catalyzed cross-couplings in water at room temperature. J Org Chem. 2011 Jun 3;76(11):4379-91.

Caution: Product has not been fully validated for medical applications. For research use only.

Tel: 609-228-6898

Fax: 609-228-5909

E-mail: tech@MedChemExpress.com

Address: 1 Deer Park Dr, Suite Q, Monmouth Junction, NJ 08852, USA