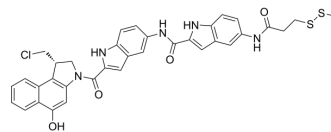


## DC1SMe

<b>Cat. No.:</b>	HY-112898
<b>CAS No.:</b>	501666-85-9
<b>Molecular Formula:</b>	C <sub>35</sub> H <sub>30</sub> ClN <sub>5</sub> O <sub>4</sub> S <sub>2</sub>
<b>Molecular Weight:</b>	684.23
<b>Target:</b>	ADC Cytotoxin
<b>Pathway:</b>	Antibody-drug Conjugate/ADC Related
<b>Storage:</b>	-20°C, stored under nitrogen, away from moisture * In solvent : -80°C, 6 months; -20°C, 1 month (stored under nitrogen, away from moisture)



## BIOLOGICAL ACTIVITY

<b>Description</b>	DC1SMe, a DC1 derivative, exhibits IC <sub>50</sub> values of 22 pM, 10 pM, 32 pM and 250 pM for Ramos, Namalwa, HL60/s and COLO 205 cancer cells, respectively. DC1, an analogue of the minor groove-binding DNA alkylator CC-1065, is a ADC Cytotoxin. DC1 can be used in synthesis of antibody-drug conjugates for the targeted treatment of cancer.
--------------------	---

<b>IC<sub>50</sub> &amp; Target</b>	Duocarmycins
-------------------------------------	--------------

## REFERENCES

[1]. Zhao RY, et al. Synthesis and biological evaluation of antibody conjugates of phosphate prodrugs of cytotoxic DNA alkylators for the targeted treatment of cancer. *J Med Chem.* 2012 Jan 26;55(2):766-82.

**Caution: Product has not been fully validated for medical applications. For research use only.**

Tel: 609-228-6898

Fax: 609-228-5909

E-mail: tech@MedChemExpress.com

Address: 1 Deer Park Dr, Suite Q, Monmouth Junction, NJ 08852, USA