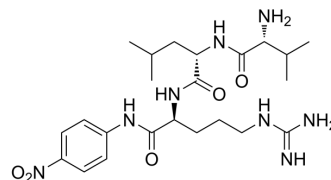


D-Val-Leu-Arg-pNA

Cat. No.:	HY-114150
CAS No.:	64816-14-4
Molecular Formula:	C ₂₃ H ₃₈ N ₈ O ₅
Molecular Weight:	506.6
Target:	Others
Pathway:	Others
Storage:	Please store the product under the recommended conditions in the Certificate of Analysis.



BIOLOGICAL ACTIVITY

Description

D-Val-Leu-Arg-pNA is a glandular kininoreleasing enzyme substrate that also acts as a substrate for tissue-type plasminogen activator (t-PA) with no apparent affinity for fibrin^[1].

REFERENCES

[1]. Fischer BE, et al. Effects of intact fibrin and partially plasmin-degraded fibrin on kinetic properties of one-chain tissue-type plasminogen activator. *Biochim Biophys Acta*. 1990 Oct 18;1041(1):48-54.

Caution: Product has not been fully validated for medical applications. For research use only.

Tel: 609-228-6898

Fax: 609-228-5909

E-mail: tech@MedChemExpress.com

Address: 1 Deer Park Dr, Suite Q, Monmouth Junction, NJ 08852, USA