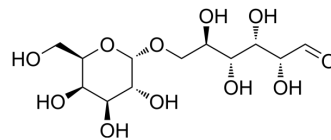


D-Melibiose

Cat. No.:	HY-107824		
CAS No.:	585-99-9		
Molecular Formula:	C ₁₂ H ₂₂ O ₁₁		
Molecular Weight:	342.3		
Target:	Endogenous Metabolite		
Pathway:	Metabolic Enzyme/Protease		
Storage:	Powder	-20°C	3 years
		4°C	2 years
	In solvent	-80°C	2 years
		-20°C	1 year



SOLVENT & SOLUBILITY

In Vitro

H₂O : 125 mg/mL (365.18 mM; Need ultrasonic)
 DMSO : 8.33 mg/mL (24.34 mM; Need ultrasonic)

	Solvent Concentration	Mass		
		1 mg	5 mg	10 mg
Preparing Stock Solutions	1 mM	2.9214 mL	14.6071 mL	29.2141 mL
	5 mM	0.5843 mL	2.9214 mL	5.8428 mL
	10 mM	0.2921 mL	1.4607 mL	2.9214 mL

Please refer to the solubility information to select the appropriate solvent.

In Vivo

- Add each solvent one by one: PBS
Solubility: 50 mg/mL (146.07 mM); Clear solution; Need ultrasonic
- Add each solvent one by one: 10% DMSO >> 40% PEG300 >> 5% Tween-80 >> 45% saline
Solubility: ≥ 2.5 mg/mL (7.30 mM); Clear solution
- Add each solvent one by one: 10% DMSO >> 90% (20% SBE-β-CD in saline)
Solubility: ≥ 2.5 mg/mL (7.30 mM); Clear solution
- Add each solvent one by one: 10% DMSO >> 90% corn oil
Solubility: ≥ 2.5 mg/mL (7.30 mM); Clear solution

BIOLOGICAL ACTIVITY

Description

D-Melibiose is a disaccharide which is composed of one galactose and one glucose moiety in an alpha (1-6) glycosidic linkage.

IC₅₀ & Target

Human Endogenous Metabolite

Caution: Product has not been fully validated for medical applications. For research use only.

Tel: 609-228-6898

Fax: 609-228-5909

E-mail: tech@MedChemExpress.com

Address: 1 Deer Park Dr, Suite Q, Monmouth Junction, NJ 08852, USA