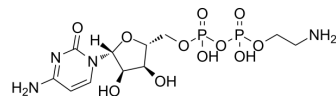


Cytidine 5'-diphosphoethanolamine

Cat. No.:	HY-145780
CAS No.:	3036-18-8
Molecular Formula:	C ₁₁ H ₂₀ N ₄ O ₁₁ P ₂
Molecular Weight:	446.24
Target:	Cholinesterase (ChE)
Pathway:	Neuronal Signaling
Storage:	Powder -20°C 3 years In solvent -80°C 6 months -20°C 1 month



BIOLOGICAL ACTIVITY

Description

Cytidine 5'-diphosphoethanolamine is an intermediate compound in the synthesis of phosphatidylethanolamine. Cytidine 5'-diphosphoethanolamine is a stimulant of Ach synthesis^[1].

REFERENCES

[1]. Bostwick JR, et al. Purification and characterization of a central cholinergic enhancing factor from rat brain: its identity as phosphoethanolamine. J Neurochem. 1989;53(2):448-458.

Caution: Product has not been fully validated for medical applications. For research use only.

Tel: 609-228-6898

Fax: 609-228-5909

E-mail: tech@MedChemExpress.com

Address: 1 Deer Park Dr, Suite Q, Monmouth Junction, NJ 08852, USA