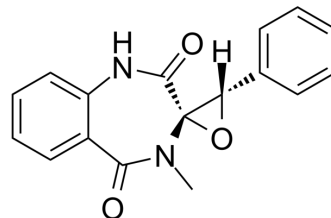


Cyclopenin

Cat. No.:	HY-113626A
CAS No.:	19553-26-5
Molecular Formula:	C ₁₇ H ₁₄ N ₂ O ₃
Molecular Weight:	294.3
Target:	AChE
Pathway:	Neuronal Signaling
Storage:	Please store the product under the recommended conditions in the Certificate of Analysis.



BIOLOGICAL ACTIVITY

Description	Cyclopenin ((±)-Isocyclophenine) is a racemate ^[1] .
-------------	---

REFERENCES

[1]. K Ootoguro, et al. Arisugacins, selective acetylcholinesterase inhibitors of microbial origin. Pharmacol Ther. Oct-Dec 1997;76(1-3):45-54.

Caution: Product has not been fully validated for medical applications. For research use only.

Tel: 609-228-6898

Fax: 609-228-5909

E-mail: tech@MedChemExpress.com

Address: 1 Deer Park Dr, Suite Q, Monmouth Junction, NJ 08852, USA