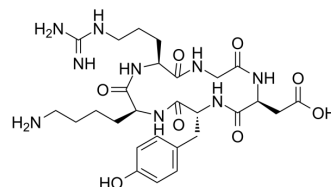


## Cyclo(RGDyK)

<b>Cat. No.:</b>	HY-100563A
<b>CAS No.:</b>	217099-14-4
<b>Molecular Formula:</b>	C <sub>27</sub> H <sub>41</sub> N <sub>9</sub> O <sub>8</sub>
<b>Molecular Weight:</b>	619.67
<b>Target:</b>	Integrin
<b>Pathway:</b>	Cytoskeleton
<b>Storage:</b>	Sealed storage, away from moisture and light Powder    -80°C    2 years -20°C    1 year * In solvent : -80°C, 6 months; -20°C, 1 month (sealed storage, away from moisture and light)



### SOLVENT & SOLUBILITY

#### In Vitro

DMSO : 100 mg/mL (161.38 mM; Need ultrasonic)  
 H<sub>2</sub>O : 100 mg/mL (161.38 mM; Need ultrasonic)

Concentration	Mass		
	1 mg	5 mg	10 mg
1 mM	1.6138 mL	8.0688 mL	16.1376 mL
5 mM	0.3228 mL	1.6138 mL	3.2275 mL
10 mM	0.1614 mL	0.8069 mL	1.6138 mL

Please refer to the solubility information to select the appropriate solvent.

### BIOLOGICAL ACTIVITY

<b>Description</b>	Cyclo(RGDyK) is a potent and selective $\alpha_v\beta_3$ integrin inhibitor with an IC <sub>50</sub> of 20 nM.
<b>IC<sub>50</sub> &amp; Target</b>	$\alpha_v\beta_3$ 20 nM (IC <sub>50</sub> )
<b>In Vitro</b>	Cyclo(RGDyK) (c(RGDyK(SAA))) shows high affinity and selectivity for $\alpha_v\beta_3$ over $\alpha_v\beta_5$ (IC <sub>50</sub> =4000 nM) and $\alpha_{IIb}\beta_3$ (IC <sub>50</sub> =3000 nM) [1]. MCE has not independently confirmed the accuracy of these methods. They are for reference only.

### CUSTOMER VALIDATION

- 
- Stem Cell Res Ther. 2022 Jul 18;13(1):327.
  - Biochem Pharmacol. 2023 Sep 14;115808.
  - Pharmaceuticals. 2021 Mar 14;14(3):260.

See more customer validations on [www.MedChemExpress.com](http://www.MedChemExpress.com)

## REFERENCES

---

[1]. Haubner R, et al. Glycosylated RGD-containing peptides: tracer for tumor targeting and angiogenesis imaging with improved biokinetics. J Nucl Med. 2001 Feb;42(2):326-36.

---

**Caution: Product has not been fully validated for medical applications. For research use only.**

Tel: 609-228-6898

Fax: 609-228-5909

E-mail: [tech@MedChemExpress.com](mailto:tech@MedChemExpress.com)

Address: 1 Deer Park Dr, Suite Q, Monmouth Junction, NJ 08852, USA