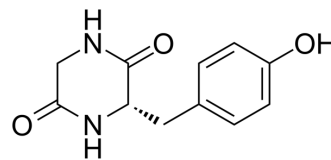


## Cyclo(Gly-Tyr)

Cat. No.:	HY-131109
CAS No.:	5845-66-9
Molecular Formula:	C <sub>11</sub> H <sub>12</sub> N <sub>2</sub> O <sub>3</sub>
Molecular Weight:	220.22
Target:	Others
Pathway:	Others
Storage:	4°C, protect from light * In solvent : -80°C, 6 months; -20°C, 1 month (protect from light)



### SOLVENT & SOLUBILITY

#### In Vitro

DMSO : 31.25 mg/mL (141.90 mM; Need ultrasonic)

Concentration	Solvent	Mass		
		1 mg	5 mg	10 mg
Preparing Stock Solutions	1 mM	4.5409 mL	22.7046 mL	45.4091 mL
	5 mM	0.9082 mL	4.5409 mL	9.0818 mL
	10 mM	0.4541 mL	2.2705 mL	4.5409 mL

Please refer to the solubility information to select the appropriate solvent.

### BIOLOGICAL ACTIVITY

#### Description

Cyclo(Gly-Tyr) is a cyclic dipeptide<sup>[1]</sup>.

### REFERENCES

[1]. Takashi Mizuma, et al. Uptake of Cyclic Dipeptide by PEPT1 in Caco-2 Cells: Phenolic Hydroxyl Group of Substrate Enhances Affinity for PEPT1. J Pharm Pharmacol. 2002 Sep;54(9):1293-6.

---

**Caution: Product has not been fully validated for medical applications. For research use only.**

Tel: 609-228-6898

Fax: 609-228-5909

E-mail: [tech@MedChemExpress.com](mailto:tech@MedChemExpress.com)

Address: 1 Deer Park Dr, Suite Q, Monmouth Junction, NJ 08852, USA