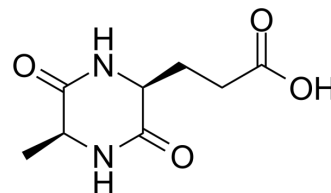


Cyclo(Ala-Glu)

Cat. No.:	HY-131110
CAS No.:	16364-36-6
Molecular Formula:	C ₈ H ₁₂ N ₂ O ₄
Molecular Weight:	200.19
Target:	Others
Pathway:	Others
Storage:	Please store the product under the recommended conditions in the Certificate of Analysis.



BIOLOGICAL ACTIVITY

Description	Cyclo(Ala-Glu) is a cyclic dipeptide ^[1] .
-------------	---

REFERENCES

[1]. Takashi Mizuma, et al. Uptake of Cyclic Dipeptide by PEPT1 in Caco-2 Cells: Phenolic Hydroxyl Group of Substrate Enhances Affinity for PEPT1. J Pharm Pharmacol. 2002 Sep;54(9):1293-6.

Caution: Product has not been fully validated for medical applications. For research use only.

Tel: 609-228-6898

Fax: 609-228-5909

E-mail: tech@MedChemExpress.com

Address: 1 Deer Park Dr, Suite Q, Monmouth Junction, NJ 08852, USA