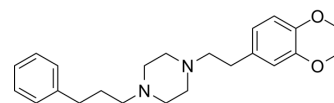


Cutamesine

Cat. No.:	HY-14813
CAS No.:	165377-43-5
Molecular Formula:	C ₂₃ H ₃₂ N ₂ O ₂
Molecular Weight:	368.51
Target:	Sigma Receptor
Pathway:	Neuronal Signaling
Storage:	Please store the product under the recommended conditions in the Certificate of Analysis.



BIOLOGICAL ACTIVITY

Description	Cutamesine (SA4503; AGY-94806) is a selective sigma 1 receptor(σ 1R) agonist; high affinity for the sigma 1 receptor (IC ₅₀ =17.4±1.9 nM); 100-fold less affinity for the sigma 2 receptor.
IC ₅₀ & Target	Sigma 1 Receptor

CUSTOMER VALIDATION

- Eur J Pharmacol. 2023 Mar 8;175647.

See more customer validations on www.MedChemExpress.com

REFERENCES

- [1]. Matsuno K, et al. Binding properties of SA4503, a novel and selective sigma 1 receptor agonist. Eur J Pharmacol. 1996 Jun 13;306(1-3):271-9.
- [2]. Minabe Y, et al. Acute and chronic administration of the selective sigma1 receptor agonist SA4503 significantly alters the activity of midbrain dopamine neurons in rats: An in vivo electrophysiological study. Synapse. 1999 Aug;33(2):129-40.
- [3]. Ono Y, et al. SA4503, a sigma-1 receptor agonist, suppresses motor neuron damage in in vitro and in vivo amyotrophic lateral sclerosis models. Neurosci Lett. 2014 Jan 24;559:174-8.

Caution: Product has not been fully validated for medical applications. For research use only.

Tel: 609-228-6898

Fax: 609-228-5909

E-mail: tech@MedChemExpress.com

Address: 1 Deer Park Dr, Suite Q, Monmouth Junction, NJ 08852, USA