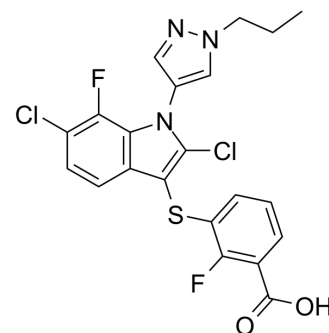


Cudetaxestat

Cat. No.:	HY-145561		
CAS No.:	1782070-21-6		
Molecular Formula:	C ₂₁ H ₁₅ Cl ₂ F ₂ N ₃ O ₂ S		
Molecular Weight:	482.33		
Target:	Phosphodiesterase (PDE)		
Pathway:	Metabolic Enzyme/Protease		
Storage:	Powder	-20°C	3 years
	In solvent	-80°C	6 months
		-20°C	1 month



SOLVENT & SOLUBILITY

In Vitro

DMSO : 250 mg/mL (518.32 mM; Need ultrasonic)

Concentration	Solvent	Mass		
		1 mg	5 mg	10 mg
Preparing Stock Solutions	1 mM	2.0733 mL	10.3663 mL	20.7327 mL
	5 mM	0.4147 mL	2.0733 mL	4.1465 mL
	10 mM	0.2073 mL	1.0366 mL	2.0733 mL

Please refer to the solubility information to select the appropriate solvent.

In Vivo

- Add each solvent one by one: 10% DMSO >> 90% (20% SBE-β-CD in saline)
Solubility: ≥ 2.08 mg/mL (4.31 mM); Clear solution
- Add each solvent one by one: 10% DMSO >> 90% corn oil
Solubility: ≥ 2.08 mg/mL (4.31 mM); Clear solution

BIOLOGICAL ACTIVITY

Description

Cudetaxestat (BLD-0409) is a potent and orally active autotaxin (ATX) inhibitor^[1].

REFERENCES

- [1]. Tan Z, et al. An updated patent review of autotaxin inhibitors (2017-present). *Expert Opin Ther Pat.* 2021;31(5):421-434.

Caution: Product has not been fully validated for medical applications. For research use only.

Tel: 609-228-6898

Fax: 609-228-5909

E-mail: tech@MedChemExpress.com

Address: 1 Deer Park Dr, Suite Q, Monmouth Junction, NJ 08852, USA