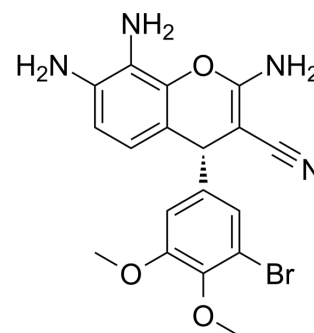


Crolibulin

Cat. No.:	HY-13603		
CAS No.:	1000852-17-4		
Molecular Formula:	C ₁₈ H ₁₇ BrN ₄ O ₃		
Molecular Weight:	417.26		
Target:	Microtubule/Tubulin; Apoptosis		
Pathway:	Cell Cycle/DNA Damage; Cytoskeleton; Apoptosis		
Storage:	Powder	-20°C	3 years
		4°C	2 years
	In solvent	-80°C	2 years
		-20°C	1 year



SOLVENT & SOLUBILITY

In Vitro

DMSO : 125 mg/mL (299.57 mM; Need ultrasonic and warming)

Concentration	Mass		
	1 mg	5 mg	10 mg
1 mM	2.3966 mL	11.9829 mL	23.9659 mL
5 mM	0.4793 mL	2.3966 mL	4.7932 mL
10 mM	0.2397 mL	1.1983 mL	2.3966 mL

Please refer to the solubility information to select the appropriate solvent.

BIOLOGICAL ACTIVITY

Description

Crolibulin (EPC2407) is a tubulin polymerization inhibitor, with potent apoptosis induction and cell growth inhibition. Crolibulin has anti-tumor activity. Crolibulin also has cardiovascular toxicity and neurotoxicity^{[1][2][3]}.

IC₅₀ & Target

Tubulin polymerization^[1]

In Vitro

Crolibulin shows significant cytotoxic activity against HT-29 cells, with an IC₅₀ of 0.52 μM^[2]. Crolibulin is active against various experimental tumors and exhibit potent inhibition of mitosis at the G2/M stage^[2]. MCE has not independently confirmed the accuracy of these methods. They are for reference only.

CUSTOMER VALIDATION

- Biochem Biophys Res Commun. 2019 Apr 2;511(2):381-386.

REFERENCES

- [1]. Kalmuk J, et al. Multimodal imaging guided preclinical trials of vascular targeting in prostate cancer. *Oncotarget*. 2015 Sep 15;6(27):24376-92.
- [2]. Zhai X, et al. Discovery and Optimization of Novel 5-Indolyl-7-arylimidazo[1,2-a]pyridine-8-carbonitrile Derivatives as Potent Antitubulin Agents Targeting Colchicine-binding Site. *Sci Rep*. 2017 Feb 27;7:43398.
- [3]. S. P. Anthony, et al. EPC2407, a new beta-tubulin vascular disrupting agent with potent apoptosis and cell growth inhibition. *Journal of Clinical Oncology* 25, no. 18_suppl (June 20, 2007) 14043-14043.
-

Caution: Product has not been fully validated for medical applications. For research use only.

Tel: 609-228-6898

Fax: 609-228-5909

E-mail: tech@MedChemExpress.com

Address: 1 Deer Park Dr, Suite Q, Monmouth Junction, NJ 08852, USA