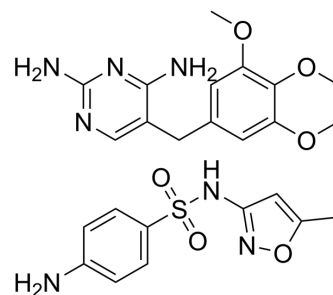


Cotrimoxazole (Trimethoprim/sulfamethoxazole 1:19)

Cat. No.:	HY-141619A		
CAS No.:	8064-90-2		
Molecular Formula:	C ₂₄ H ₂₉ N ₇ O ₆ S		
Molecular Weight:	543.6		
Target:	Bacterial		
Pathway:	Anti-infection		
Storage:	Powder	-20°C	3 years
		4°C	2 years
	In solvent	-80°C	6 months
		-20°C	1 month



SOLVENT & SOLUBILITY

In Vitro

DMSO : 100 mg/mL (183.96 mM; Need ultrasonic)

Concentration	Solvent	Mass	1 mg	5 mg	10 mg
			1 mg	5 mg	10 mg
Preparing Stock Solutions	1 mM		1.8396 mL	9.1979 mL	18.3959 mL
	5 mM		0.3679 mL	1.8396 mL	3.6792 mL
	10 mM		0.1840 mL	0.9198 mL	1.8396 mL

Please refer to the solubility information to select the appropriate solvent.

In Vivo

- Add each solvent one by one: 10% DMSO >> 40% PEG300 >> 5% Tween-80 >> 45% saline
Solubility: ≥ 2.5 mg/mL (4.60 mM); Clear solution
- Add each solvent one by one: 10% DMSO >> 90% (20% SBE-β-CD in saline)
Solubility: ≥ 2.5 mg/mL (4.60 mM); Clear solution
- Add each solvent one by one: 10% DMSO >> 90% corn oil
Solubility: ≥ 2.5 mg/mL (4.60 mM); Clear solution

BIOLOGICAL ACTIVITY

Description

Cotrimoxazole (Trimethoprim/sulfamethoxazole 1:19), an antimicrobial agent, is a Trimethoprim and Sulfamethoxazole mixture. The ratio of Trimethoprim to Sulfamethoxazole in the combination mixture is 1 : 19^[1].

REFERENCES

[1]. Tsi-Shu Huang, et al. Susceptibility of Mycobacterium tuberculosis to sulfamethoxazole, trimethoprim and their combination over a 12 year period in Taiwan. J Antimicrob Chemother. 2012 Mar;67(3):633-7.

Caution: Product has not been fully validated for medical applications. For research use only.

Tel: 609-228-6898

Fax: 609-228-5909

E-mail: tech@MedChemExpress.com

Address: 1 Deer Park Dr, Suite Q, Monmouth Junction, NJ 08852, USA