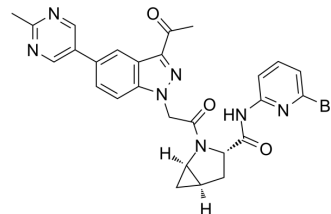


Complement factor D-IN-2

Cat. No.:	HY-138281
CAS No.:	1903742-34-6
Molecular Formula:	C ₂₇ H ₂₄ BrN ₇ O ₃
Molecular Weight:	574.43
Target:	Complement System
Pathway:	Immunology/Inflammation
Storage:	4°C, protect from light * In solvent : -80°C, 6 months; -20°C, 1 month (protect from light)



SOLVENT & SOLUBILITY

In Vitro

DMSO : 100 mg/mL (174.09 mM; Need ultrasonic)

Concentration	Mass			
	1 mg	5 mg	10 mg	
1 mM	1.7409 mL	8.7043 mL	17.4086 mL	
5 mM	0.3482 mL	1.7409 mL	3.4817 mL	
10 mM	0.1741 mL	0.8704 mL	1.7409 mL	

Please refer to the solubility information to select the appropriate solvent.

BIOLOGICAL ACTIVITY

Description

Complement factor D-IN-2 is an inhibitor of complement factor D extracted from patent WO2015130838A1, compound 190. Complement factor D-IN-2 targets factor D and inhibits the complement cascade at an early and essential point in the alternative complement pathway. Complement factor D-IN-2 can be used for the research of autoimmune diseases^[1].

IC₅₀ & Target

complement factor D^[1]

In Vitro

Complement factor D-IN-2 reduces the excessive activation of complement factor D^[1].
MCE has not independently confirmed the accuracy of these methods. They are for reference only.

REFERENCES

[1]. GADHACHANDA VR, et, al. Aryl, heteroaryl, and heterocyclic compounds for treatment of complement mediated disorders. WO2015130838A1.

Caution: Product has not been fully validated for medical applications. For research use only.

Tel: 609-228-6898

Fax: 609-228-5909

E-mail: tech@MedChemExpress.com

Address: 1 Deer Park Dr, Suite Q, Monmouth Junction, NJ 08852, USA