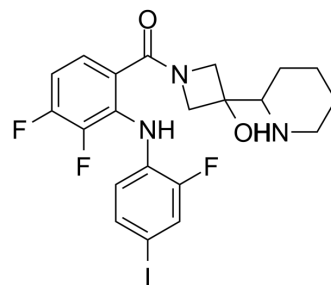


## Cobimetinib racemate

Cat. No.:	HY-13078		
CAS No.:	934662-91-6		
Molecular Formula:	C <sub>21</sub> H <sub>21</sub> F <sub>3</sub> IN <sub>3</sub> O <sub>2</sub>		
Molecular Weight:	531.31		
Target:	MEK		
Pathway:	MAPK/ERK Pathway		
Storage:	Powder	-20°C	3 years
		4°C	2 years
	In solvent	-80°C	2 years
		-20°C	1 year



### SOLVENT & SOLUBILITY

#### In Vitro

DMSO : ≥ 40 mg/mL (75.29 mM)  
 \* "≥" means soluble, but saturation unknown.

Concentration	Mass		
	1 mg	5 mg	10 mg
1 mM	1.8821 mL	9.4107 mL	18.8214 mL
5 mM	0.3764 mL	1.8821 mL	3.7643 mL
10 mM	0.1882 mL	0.9411 mL	1.8821 mL

Please refer to the solubility information to select the appropriate solvent.

#### In Vivo

- Add each solvent one by one: 10% DMSO >> 40% PEG300 >> 5% Tween-80 >> 45% saline  
 Solubility: ≥ 2.5 mg/mL (4.71 mM); Clear solution
- Add each solvent one by one: 10% DMSO >> 90% (20% SBE-β-CD in saline)  
 Solubility: ≥ 2.5 mg/mL (4.71 mM); Clear solution
- Add each solvent one by one: 10% DMSO >> 90% corn oil  
 Solubility: ≥ 2.5 mg/mL (4.71 mM); Clear solution

### BIOLOGICAL ACTIVITY

#### Description

Cobimetinib racemate (GDC-0973 racemate; XL518 racemate) is the racemate of Cobimetinib. Cobimetinib is a potent and selective MEK inhibitor.

### REFERENCES

---

[1]. Hoeflich KP, et al. Intermittent administration of MEK inhibitor GDC-0973 plus PI3K inhibitor GDC-0941 triggers robust apoptosis and tumor growth inhibition. Cancer Res. 2012 Jan 1;72(1):210-9.

---

**Caution: Product has not been fully validated for medical applications. For research use only.**

Tel: 609-228-6898

Fax: 609-228-5909

E-mail: [tech@MedChemExpress.com](mailto:tech@MedChemExpress.com)

Address: 1 Deer Park Dr, Suite Q, Monmouth Junction, NJ 08852, USA