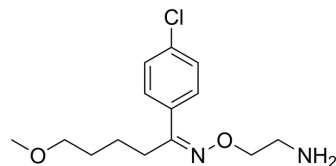


Clovoxamine

Cat. No.:	HY-129985
CAS No.:	54739-19-4
Molecular Formula:	C ₁₄ H ₂₁ ClN ₂ O ₂
Molecular Weight:	284.78
Target:	Serotonin Transporter; 5-HT Receptor
Pathway:	Neuronal Signaling; GPCR/G Protein
Storage:	Please store the product under the recommended conditions in the Certificate of Analysis.



BIOLOGICAL ACTIVITY

Description

Clovoxamine (DU23811) (Compound 35) has binding affinity for serotonin transporter (SERT) (K_i: 61 nM). Clovoxamine is a 5-HT and norepinephrine reuptake (NE) re-uptake inhibitor. Clovoxamine is an antidepressant^{[1][2][3]}.

REFERENCES

- [1]. Staroń J, et al. Tuning the activity of known drugs via the introduction of halogen atoms, a case study of SERT ligands - Fluoxetine and fluvoxamine. *Eur J Med Chem.* 2021 Aug 5;220:113533.
- [2]. Saletu B, et al. Clovoxamine and fluvoxamine-2 biogenic amine re-uptake inhibiting antidepressants: quantitative EEG, psychometric and pharmacokinetic studies in man. *J Neural Transm.* 1980;49(1-2):63-86.
- [3]. de Jong GJ. The use of a pre-column for the direct high-performance liquid chromatographic determination of the anti-depressants clovoxamine and fluvoxamine in plasma. *J Chromatogr.* 1980 Aug 8;183(2):203-11.

Caution: Product has not been fully validated for medical applications. For research use only.

Tel: 609-228-6898

Fax: 609-228-5909

E-mail: tech@MedChemExpress.com

Address: 1 Deer Park Dr, Suite Q, Monmouth Junction, NJ 08852, USA