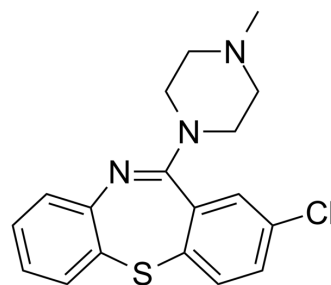


Clothiapine

Cat. No.:	HY-117083		
CAS No.:	2058-52-8		
Molecular Formula:	C ₁₈ H ₁₈ ClN ₃ S		
Molecular Weight:	343.87		
Target:	5-HT Receptor		
Pathway:	GPCR/G Protein; Neuronal Signaling		
Storage:	Powder	-20°C	3 years
		4°C	2 years
	In solvent	-80°C	6 months
		-20°C	1 month



SOLVENT & SOLUBILITY

In Vitro

DMSO : 62.5 mg/mL (181.75 mM; ultrasonic and warming and heat to 60°C)

Concentration	Solvent	Mass		
		1 mg	5 mg	10 mg
Preparing Stock Solutions	1 mM	2.9081 mL	14.5404 mL	29.0808 mL
	5 mM	0.5816 mL	2.9081 mL	5.8162 mL
	10 mM	0.2908 mL	1.4540 mL	2.9081 mL

Please refer to the solubility information to select the appropriate solvent.

BIOLOGICAL ACTIVITY

Description

Clothiapine, an atypical antipsychotic agent, shares with clozapine its strong antiserotonergic properties^[1].

REFERENCES

[1]. Toren P, et al. Case study: emergence of transient compulsive symptoms during treatment with clothiapine. J Am Acad Child Adolesc Psychiatry. 1995;34(11):1469-1472.

Caution: Product has not been fully validated for medical applications. For research use only.

Tel: 609-228-6898

Fax: 609-228-5909

E-mail: tech@MedChemExpress.com

Address: 1 Deer Park Dr, Suite Q, Monmouth Junction, NJ 08852, USA