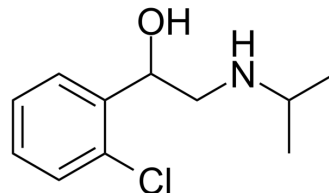


## Clorprenaline

**Cat. No.:** HY-134577  
**CAS No.:** 3811-25-4  
**Molecular Formula:** C<sub>11</sub>H<sub>16</sub>ClNO  
**Molecular Weight:** 213.7  
**Target:** Adrenergic Receptor  
**Pathway:** GPCR/G Protein; Neuronal Signaling  
**Storage:** 4°C, protect from light  
 \* In solvent : -80°C, 6 months; -20°C, 1 month (protect from light)



### SOLVENT & SOLUBILITY

#### In Vitro

DMSO : 125 mg/mL (584.93 mM; Need ultrasonic)

Concentration	Mass			
	1 mg	5 mg	10 mg	
1 mM	4.6795 mL	23.3973 mL	46.7946 mL	
5 mM	0.9359 mL	4.6795 mL	9.3589 mL	
10 mM	0.4679 mL	2.3397 mL	4.6795 mL	

Please refer to the solubility information to select the appropriate solvent.

### BIOLOGICAL ACTIVITY

#### Description

Clorprenaline is a potent agonist of  $\beta$ 2-adrenergic. Clorprenaline promotes animal muscular mass growth and decreases fat accumulation. Clorprenaline is a potential new lean meat-boosting feed additive<sup>[1]</sup>.

#### IC<sub>50</sub> & Target

$\beta$ 2-adrenergic<sup>[1]</sup>

### REFERENCES

[1]. Peng T, et al. Lateral-flow assay for rapid quantitative detection of clorprenaline residue in swine urine. J Food Prot. 2014;77(10):1824-1829.

**Caution: Product has not been fully validated for medical applications. For research use only.**

Tel: 609-228-6898

Fax: 609-228-5909

E-mail: tech@MedChemExpress.com

Address: 1 Deer Park Dr, Suite Q, Monmouth Junction, NJ 08852, USA