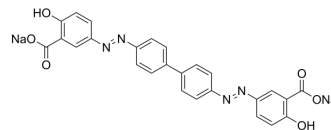


Chrysamine G

Cat. No.:	HY-136480
CAS No.:	6472-91-9
Molecular Formula:	C ₂₆ H ₁₆ N ₄ Na ₂ O ₆
Molecular Weight:	526.41
Target:	Amyloid-β
Pathway:	Neuronal Signaling
Storage:	Please store the product under the recommended conditions in the Certificate of Analysis.



BIOLOGICAL ACTIVITY

Description

Chrysamine G, a carboxylic acid analogue of Congo Red, can be used as a probe of amyloid deposition in Alzheimer's disease. Chrysamine G also can inhibit Aβ-induced toxicity in PC12 cells^{[1][2]}.

REFERENCES

- [1]. Klunk WE, et, al. Chrysamine-G binding to Alzheimer and control brain: autopsy study of a new amyloid probe. *Neurobiol Aging*. Jul-Aug 1995;16(4):541-8.
- [2]. Klunk WE, et, al. Chrysamine-G, a lipophilic analogue of Congo red, inhibits A beta-induced toxicity in PC12 cells. *Life Sci*. 1998;63(20):1807-14.

Caution: Product has not been fully validated for medical applications. For research use only.

Tel: 609-228-6898

Fax: 609-228-5909

E-mail: tech@MedChemExpress.com

Address: 1 Deer Park Dr, Suite Q, Monmouth Junction, NJ 08852, USA