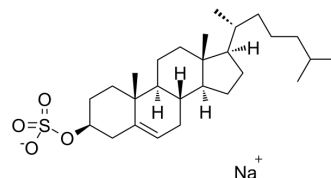


## Cholesteryl sulfate sodium

<b>Cat. No.:</b>	HY-111355B
<b>CAS No.:</b>	2864-50-8
<b>Molecular Formula:</b>	C <sub>27</sub> H <sub>45</sub> NaO <sub>4</sub> S
<b>Molecular Weight:</b>	488.7
<b>Target:</b>	Endogenous Metabolite
<b>Pathway:</b>	Metabolic Enzyme/Protease
<b>Storage:</b>	-20°C, stored under nitrogen, away from moisture * In solvent : -80°C, 6 months; -20°C, 1 month (stored under nitrogen, away from moisture)



### SOLVENT & SOLUBILITY

#### In Vitro

DMSO : 10 mg/mL (20.46 mM; ultrasonic and warming and heat to 60°C)  
H<sub>2</sub>O : < 0.1 mg/mL (ultrasonic;warming;heat to 60°C) (insoluble)

Concentration	Solvent	Mass		
		1 mg	5 mg	10 mg
Preparing Stock Solutions	1 mM	2.0462 mL	10.2312 mL	20.4625 mL
	5 mM	0.4092 mL	2.0462 mL	4.0925 mL
	10 mM	0.2046 mL	1.0231 mL	2.0462 mL

Please refer to the solubility information to select the appropriate solvent.

#### In Vivo

- Add each solvent one by one: 10% DMSO >> 40% PEG300 >> 5% Tween-80 >> 45% saline  
Solubility: ≥ 2.5 mg/mL (5.12 mM); Clear solution
- Add each solvent one by one: 10% DMSO >> 90% (20% SBE-β-CD in saline)  
Solubility: ≥ 2.5 mg/mL (5.12 mM); Clear solution
- Add each solvent one by one: 10% DMSO >> 90% corn oil  
Solubility: ≥ 2.5 mg/mL (5.12 mM); Clear solution

### BIOLOGICAL ACTIVITY

#### Description

Cholesteryl sulfate sodium is an important regulatory molecule. Cholesterol sulfate sodium is a component of cell membranes where it has a stabilizing role and protects erythrocytes from osmotic lysis and regulating sperm capacitation<sup>[1]</sup>

### REFERENCES

**Caution: Product has not been fully validated for medical applications. For research use only.**

Tel: 609-228-6898

Fax: 609-228-5909

E-mail: [tech@MedChemExpress.com](mailto:tech@MedChemExpress.com)

Address: 1 Deer Park Dr, Suite Q, Monmouth Junction, NJ 08852, USA