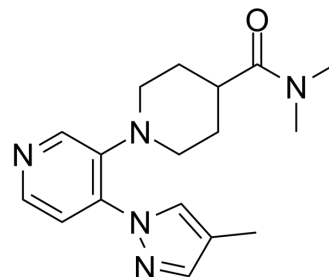


Cholesterol 24-hydroxylase-IN-1

| | | | |
|---------------------------|--|-------|----------|
| Cat. No.: | HY-144309 | | |
| CAS No.: | 1613480-70-8 | | |
| Molecular Formula: | C ₁₇ H ₂₃ N ₅ O | | |
| Molecular Weight: | 313.4 | | |
| Target: | Cytochrome P450 | | |
| Pathway: | Metabolic Enzyme/Protease | | |
| Storage: | Powder | -20°C | 3 years |
| | | 4°C | 2 years |
| | In solvent | -80°C | 6 months |
| | | -20°C | 1 month |



SOLVENT & SOLUBILITY

In Vitro

DMSO : 100 mg/mL (319.08 mM; ultrasonic and warming and heat to 60°C)

| Concentration | Mass | | |
|---------------|-----------|------------|------------|
| | 1 mg | 5 mg | 10 mg |
| 1 mM | 3.1908 mL | 15.9541 mL | 31.9081 mL |
| 5 mM | 0.6382 mL | 3.1908 mL | 6.3816 mL |
| 10 mM | 0.3191 mL | 1.5954 mL | 3.1908 mL |

Please refer to the solubility information to select the appropriate solvent.

BIOLOGICAL ACTIVITY

Description

Cholesterol 24-hydroxylase-IN-1 (compound 17) is a potent, orally active, and highly selective cholesterol 24-hydroxylase (CH24H or CYP46A1) inhibitor (IC₅₀=8.5 nM). Cholesterol 24-hydroxylase-IN-1 can cross blood-brain barrier^[1].

REFERENCES

[1]. Kajita Y, et al. Discovery of Novel 3-Piperidinyl Pyridine Derivatives as Highly Potent and Selective Cholesterol 24-Hydroxylase (CH24H) Inhibitors. J Med Chem. 2022;65(4):3343-3358.

Caution: Product has not been fully validated for medical applications. For research use only.

Tel: 609-228-6898

Fax: 609-228-5909

E-mail: tech@MedChemExpress.com

Address: 1 Deer Park Dr, Suite Q, Monmouth Junction, NJ 08852, USA