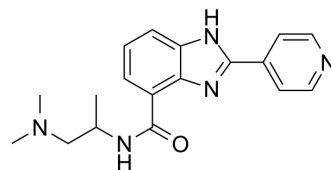


ChX710

Cat. No.:	HY-112951		
CAS No.:	2438721-44-7		
Molecular Formula:	C ₁₈ H ₂₁ N ₅ O		
Molecular Weight:	323.39		
Target:	STING		
Pathway:	Immunology/Inflammation		
Storage:	Powder	-20°C	3 years
		4°C	2 years
	In solvent	-80°C	2 years
		-20°C	1 year



SOLVENT & SOLUBILITY

In Vitro

H₂O : 50 mg/mL (154.61 mM; Need ultrasonic)
DMSO : 20 mg/mL (61.84 mM; Need ultrasonic)

Preparing Stock Solutions	Solvent Concentration	Mass		
		1 mg	5 mg	10 mg
	1 mM	3.0922 mL	15.4612 mL	30.9224 mL
	5 mM	0.6184 mL	3.0922 mL	6.1845 mL
	10 mM	0.3092 mL	1.5461 mL	3.0922 mL

Please refer to the solubility information to select the appropriate solvent.

In Vivo

- Add each solvent one by one: 10% DMSO >> 40% PEG300 >> 5% Tween-80 >> 45% saline
Solubility: ≥ 0.83 mg/mL (2.57 mM); Clear solution
- Add each solvent one by one: 10% DMSO >> 90% (20% SBE-β-CD in saline)
Solubility: ≥ 0.83 mg/mL (2.57 mM); Clear solution
- Add each solvent one by one: 10% DMSO >> 90% corn oil
Solubility: ≥ 0.83 mg/mL (2.57 mM); Clear solution

BIOLOGICAL ACTIVITY

Description

ChX710 could prime the type I interferon response to cytosolic DNA, which induces the ISRE promoter sequence, specific cellular Interferon-Stimulated Genes (ISGs), and the phosphorylation of Interferon Regulatory Factor (IRF) 3.

In Vitro

ChX710 treatment is found to efficiently prime the cellular response to DNA transfection via STING as assessed by strong synergistic effects on IFN-β expression at both transcriptional and protein levels [1].
MCE has not independently confirmed the accuracy of these methods. They are for reference only.

CUSTOMER VALIDATION

- Cell Death Differ. 2022 Sep 14.

See more customer validations on www.MedChemExpress.com

REFERENCES

[1]. Khiar S, et al. Identification of a small molecule that primes the type I interferon response to cytosolic DNA. Sci Rep. 2017 May 31;7(1):2561.

Caution: Product has not been fully validated for medical applications. For research use only.

Tel: 609-228-6898

Fax: 609-228-5909

E-mail: tech@MedChemExpress.com

Address: 1 Deer Park Dr, Suite Q, Monmouth Junction, NJ 08852, USA