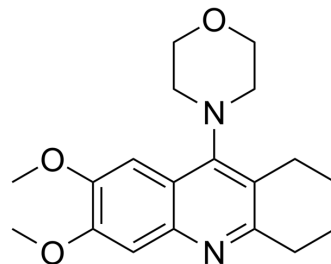


ChE/A β 1-42-IN-1

Cat. No.:	HY-144388
Molecular Formula:	C ₁₉ H ₂₄ N ₂ O ₃
Molecular Weight:	328.41
Target:	AChE; Amyloid- β
Pathway:	Neuronal Signaling
Storage:	Please store the product under the recommended conditions in the Certificate of Analysis.



BIOLOGICAL ACTIVITY

Description

ChE/A β 1-42-IN-1 (compound 28) is a potent ChE and A β ₁₋₄₂ aggregation inhibitor with IC₅₀s of 0.062, 0.767 and 1.227 μ M for AChE, BuChE and A β ₁₋₄₂ aggregation, respectively. ChE/ β 1-42-IN-1 shows excellent BBB penetration. ChE/A β 1-42-IN-1 is a potent multi-targeted anti-Alzheimer's agent^[1].

REFERENCES

[1]. Waly OM, et al. Synthesis, biological evaluation, and molecular modeling simulations of new heterocyclic hybrids as multi-targeted anti-Alzheimer's agents. Eur J Med Chem. 2022;231:114152.

Caution: Product has not been fully validated for medical applications. For research use only.

Tel: 609-228-6898

Fax: 609-228-5909

E-mail: tech@MedChemExpress.com

Address: 1 Deer Park Dr, Suite Q, Monmouth Junction, NJ 08852, USA