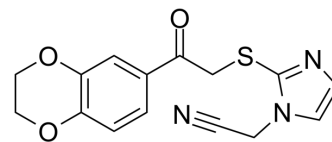


## Cathepsin X-IN-1

Cat. No.:	HY-146985
CAS No.:	2418577-51-0
Molecular Formula:	C <sub>15</sub> H <sub>13</sub> N <sub>3</sub> O <sub>3</sub> S
Molecular Weight:	315
Target:	Cathepsin
Pathway:	Metabolic Enzyme/Protease
Storage:	4°C, protect from light * In solvent : -80°C, 6 months; -20°C, 1 month (protect from light)



### SOLVENT & SOLUBILITY

#### In Vitro

DMSO : ≥ 100 mg/mL (317.46 mM)  
 H<sub>2</sub>O : ≥ 4.85 mg/mL (15.40 mM)  
 \* "≥" means soluble, but saturation unknown.

Preparing Stock Solutions	Solvent Concentration	Mass	1 mg	5 mg	10 mg
		1 mM	3.1746 mL	15.8730 mL	31.7460 mL
5 mM	0.6349 mL	3.1746 mL	6.3492 mL		
10 mM	0.3175 mL	1.5873 mL	3.1746 mL		

Please refer to the solubility information to select the appropriate solvent.

### BIOLOGICAL ACTIVITY

#### Description

Cathepsin X-IN-1 (compound 25) is a potent Cathepsin X inhibitor with an IC<sub>50</sub> of 7.13 μM. Cathepsin X-IN-1 decreases PC-3 cell migration with low cytotoxic<sup>[1]</sup>.

#### IC<sub>50</sub> & Target

IC<sub>50</sub>: 7.13 μM (Cathepsin X)<sup>[1]</sup>

### REFERENCES

[1]. Fonović UP, et al. Structure-activity relationships of triazole-benzodioxine inhibitors of cathepsin X. Eur J Med Chem. 2020 May 1;193:112218.

---

**Caution: Product has not been fully validated for medical applications. For research use only.**

Tel: 609-228-6898

Fax: 609-228-5909

E-mail: [tech@MedChemExpress.com](mailto:tech@MedChemExpress.com)

Address: 1 Deer Park Dr, Suite Q, Monmouth Junction, NJ 08852, USA