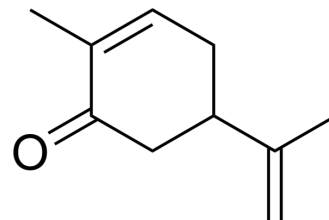


Carvone

| | |
|--------------------|--|
| Cat. No.: | HY-108964 |
| CAS No.: | 99-49-0 |
| Molecular Formula: | C ₁₀ H ₁₄ O |
| Molecular Weight: | 150.22 |
| Target: | Bacterial |
| Pathway: | Anti-infection |
| Storage: | 4°C, stored under nitrogen * In solvent : -80°C, 6 months; -20°C, 1 month (stored under nitrogen) |



SOLVENT & SOLUBILITY

| | | | | | | | |
|---|---|-----------------------|------|-------|-----------|------------|------------|
| In Vitro | DMSO : 100 mg/mL (665.69 mM; Need ultrasonic) | | | | | | |
| | Preparing Stock Solutions | Solvent Concentration | Mass | 1 mg | 5 mg | 10 mg | |
| | | | | 1 mM | 6.6569 mL | 33.2845 mL | 66.5690 mL |
| | | | | 5 mM | 1.3314 mL | 6.6569 mL | 13.3138 mL |
| | | | | 10 mM | 0.6657 mL | 3.3285 mL | 6.6569 mL |
| Please refer to the solubility information to select the appropriate solvent. | | | | | | | |
| In Vivo | 1. Add each solvent one by one: 10% DMSO >> 40% PEG300 >> 5% Tween-80 >> 45% saline Solubility: ≥ 2.5 mg/mL (16.64 mM); Clear solution | | | | | | |
| | 2. Add each solvent one by one: 10% DMSO >> 90% (20% SBE-β-CD in saline) Solubility: ≥ 2.5 mg/mL (16.64 mM); Clear solution | | | | | | |
| | 3. Add each solvent one by one: 10% DMSO >> 90% corn oil Solubility: ≥ 2.5 mg/mL (16.64 mM); Clear solution | | | | | | |

BIOLOGICAL ACTIVITY

| | |
|-------------|--|
| Description | Carvone is a ketone monoterpene found mostly in the essential oils from plants of the genus <i>Mentha</i> . Carvone is widely used in the pharmaceutical industry, cosmetics and agriculture. Carvone has such effects as antimicrobial, antioxidant, anti-inflammatory, antispasmodic, antinociceptive, anticonvulsant ^[1] . |
|-------------|--|

REFERENCES

[1]. Lícia T S Pina, et al. Carvone and its pharmacological activities: A systematic review. *Phytochemistry*. 2022 Apr;196:113080.

Caution: Product has not been fully validated for medical applications. For research use only.

Tel: 609-228-6898

Fax: 609-228-5909

E-mail: tech@MedChemExpress.com

Address: 1 Deer Park Dr, Suite Q, Monmouth Junction, NJ 08852, USA