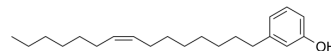


Cardanol monoene

Cat. No.:	HY-119979		
CAS No.:	501-26-8		
Molecular Formula:	C ₂₁ H ₃₄ O		
Molecular Weight:	302		
Target:	Apoptosis		
Pathway:	Apoptosis		
Storage:	Pure form	-20°C	3 years
		4°C	2 years
	In solvent	-80°C	6 months
		-20°C	1 month



BIOLOGICAL ACTIVITY

Description

Cardanol monoene (Cardanol C15:1) is a phenolic compound which can be found in cashew nut shell liquid. Cardanol monoene can induce mitochondria-associated apoptosis in human melanoma cells^[1].

REFERENCES

[1]. Su WC, et, al. Mitochondria-Associated Apoptosis in Human Melanoma Cells Induced by Cardanol Monoene from Cashew Nut Shell Liquid. J Agric Food Chem. 2017 Jul 19;65(28):5620-5631.

Caution: Product has not been fully validated for medical applications. For research use only.

Tel: 609-228-6898

Fax: 609-228-5909

E-mail: tech@MedChemExpress.com

Address: 1 Deer Park Dr, Suite Q, Monmouth Junction, NJ 08852, USA