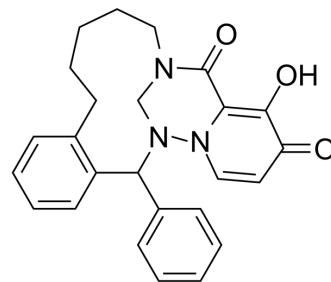


Cap-dependent endonuclease-IN-25

Cat. No.:	HY-144068
CAS No.:	2415788-71-3
Molecular Formula:	C ₂₅ H ₂₅ N ₃ O ₃
Molecular Weight:	415.48
Target:	Influenza Virus
Pathway:	Anti-infection
Storage:	Please store the product under the recommended conditions in the Certificate of Analysis.



BIOLOGICAL ACTIVITY

Description

Cap-dependent endonuclease-IN-25 is a potent inhibitor of cap-dependent endonuclease (CEN). Cap-dependent endonuclease-IN-25 is a macrocyclic pyridotriazine derivative. Cap-dependent endonuclease-IN-25 has the potential for the research of viral infections caused by viruses belonging to the Orthomyxoviridae family (extracted from patent WO2020075080A1, compound 4)^[1].

REFERENCES

[1]. Robert Than Hendricks, et al. Macrocyclic flu endonuclease inhibitors. Patent WO2020075080A1.

Caution: Product has not been fully validated for medical applications. For research use only.

Tel: 609-228-6898

Fax: 609-228-5909

E-mail: tech@MedChemExpress.com

Address: 1 Deer Park Dr, Suite Q, Monmouth Junction, NJ 08852, USA