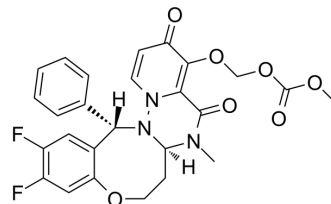


## Cap-dependent endonuclease-IN-23

Cat. No.:	HY-144067
CAS No.:	2741952-36-1
Molecular Formula:	C <sub>26</sub> H <sub>23</sub> F <sub>2</sub> N <sub>3</sub> O <sub>7</sub>
Molecular Weight:	527.47
Target:	Influenza Virus
Pathway:	Anti-infection
Storage:	Please store the product under the recommended conditions in the Certificate of Analysis.



### BIOLOGICAL ACTIVITY

#### Description

Cap-dependent endonuclease-IN-23 is a potent inhibitor of cap-dependent endonuclease (CEN). Cap-dependent endonuclease-IN-23 inhibits the replication of influenza virus. Cap-dependent endonuclease-IN-23 has the potential for the research of influenza virus infection (influenza A) (extracted from patent WO2021233302A1, compound 8A or 8B)<sup>[1]</sup>.

### REFERENCES

[1]. Shuhui Chen, et al. Fused ring derivatives and their pharmaceutical applications. Patent WO2021233302A1.

**Caution: Product has not been fully validated for medical applications. For research use only.**

Tel: 609-228-6898

Fax: 609-228-5909

E-mail: tech@MedChemExpress.com

Address: 1 Deer Park Dr, Suite Q, Monmouth Junction, NJ 08852, USA