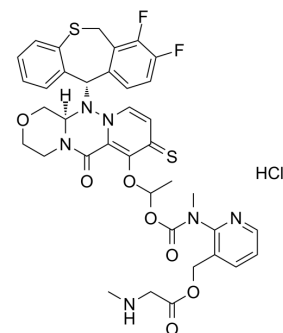


Cap-dependent endonuclease-IN-22

Cat. No.:	HY-143776
CAS No.:	2641942-32-5
Molecular Formula:	C ₃₇ H ₃₇ ClF ₂ N ₆ O ₇ S ₂
Molecular Weight:	815.31
Target:	Influenza Virus
Pathway:	Anti-infection
Storage:	Please store the product under the recommended conditions in the Certificate of Analysis.



BIOLOGICAL ACTIVITY

Description	Cap-dependent endonuclease-IN-22 is a potent cap-dependent endonuclease (CEN) inhibitor ^[1] .
In Vivo	Cap-Dependent Endonuclease Inhibition MCE has not independently confirmed the accuracy of these methods. They are for reference only.

REFERENCES

[1]. Prodrugs of Barosavir and derivatives thereof, preparation method and application thereof. CN112745334A.

Caution: Product has not been fully validated for medical applications. For research use only.

Tel: 609-228-6898

Fax: 609-228-5909

E-mail: tech@MedChemExpress.com

Address: 1 Deer Park Dr, Suite Q, Monmouth Junction, NJ 08852, USA