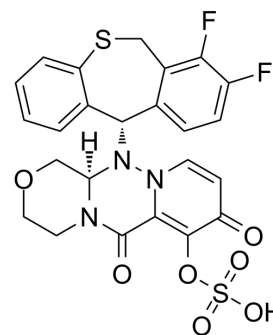


## Cap-dependent endonuclease-IN-20

Cat. No.:	HY-143775
CAS No.:	2656435-01-5
Molecular Formula:	C <sub>24</sub> H <sub>19</sub> F <sub>2</sub> N <sub>3</sub> O <sub>7</sub> S <sub>2</sub>
Molecular Weight:	563.55
Target:	Influenza Virus
Pathway:	Anti-infection
Storage:	Please store the product under the recommended conditions in the Certificate of Analysis.



### BIOLOGICAL ACTIVITY

#### Description

Cap-dependent endonuclease-IN-20 is a cap-dependent endonuclease (CEN) inhibitor. Cap-dependent endonuclease-IN-20 shows antiviral activity against influenza virus A/Hanfang/359/95 (H3N2) with IC<sub>50</sub> of 4.82 μM (CN112940009A; DSC801)<sup>[1]</sup>.

### REFERENCES

[1]. Zhefeng, Zhang, et al. Sulfonic acid polycyclic compound, pharmaceutical composition and application thereof. CN112940009A

**Caution: Product has not been fully validated for medical applications. For research use only.**

Tel: 609-228-6898

Fax: 609-228-5909

E-mail: tech@MedChemExpress.com

Address: 1 Deer Park Dr, Suite Q, Monmouth Junction, NJ 08852, USA