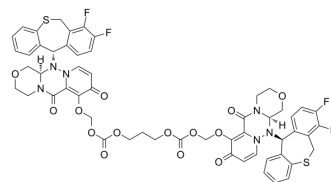


Cap-dependent endonuclease-IN-12

Cat. No.:	HY-143762
CAS No.:	2460686-97-7
Molecular Formula:	C ₅₅ H ₄₆ F ₄ N ₆ O ₁₄ S ₂
Molecular Weight:	1155.11
Target:	Influenza Virus
Pathway:	Anti-infection
Storage:	Please store the product under the recommended conditions in the Certificate of Analysis.



BIOLOGICAL ACTIVITY

Description

Cap-dependent endonuclease-IN-12 (EXP-35) is a potent Cap-dependent endonuclease inhibitor with low cytotoxicity. Cap-dependent endonuclease-IN-12 shows inhibitory activity against H1N1^[1].

REFERENCES

[1]. Fused ring pyridone derivative and preparation method and application thereof. CN111233891B.

Caution: Product has not been fully validated for medical applications. For research use only.

Tel: 609-228-6898

Fax: 609-228-5909

E-mail: tech@MedChemExpress.com

Address: 1 Deer Park Dr, Suite Q, Monmouth Junction, NJ 08852, USA