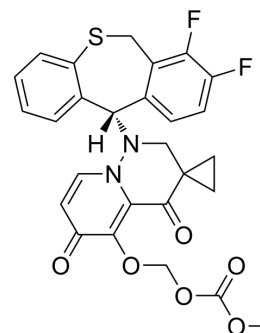


## Cap-dependent endonuclease-IN-1

Cat. No.:	HY-132894
CAS No.:	2365473-17-0
Molecular Formula:	C <sub>27</sub> H <sub>22</sub> F <sub>2</sub> N <sub>2</sub> O <sub>6</sub> S
Molecular Weight:	540.54
Target:	Influenza Virus
Pathway:	Anti-infection
Storage:	Please store the product under the recommended conditions in the Certificate of Analysis.



### BIOLOGICAL ACTIVITY

#### Description

Cap-dependent endonuclease-IN-1 is an orally active cap-dependent endonuclease inhibitor with high potency. Cap-dependent endonuclease-IN-1 can be used for the research of influenza<sup>[1][2]</sup>.

### REFERENCES

- [1]. Ming-Chu Hsu, et al. Cap-dependent endonuclease inhibitors. Patent WO2019144089A1.  
[2]. Chi-Feng Yen, et al. Amorphous solid dispersion formulation. Patent US20220202817A1.

**Caution: Product has not been fully validated for medical applications. For research use only.**

Tel: 609-228-6898

Fax: 609-228-5909

E-mail: tech@MedChemExpress.com

Address: 1 Deer Park Dr, Suite Q, Monmouth Junction, NJ 08852, USA