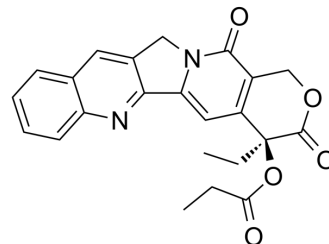


Camptothecin-20(S)-O-propionate

Cat. No.:	HY-114668		
CAS No.:	194414-69-2		
Molecular Formula:	C ₂₃ H ₂₀ N ₂ O ₅		
Molecular Weight:	404.42		
Target:	Topoisomerase		
Pathway:	Cell Cycle/DNA Damage		
Storage:	Powder	-20°C	3 years
		4°C	2 years
	In solvent	-80°C	6 months
		-20°C	1 month



SOLVENT & SOLUBILITY

In Vitro

DMSO : 9.09 mg/mL (22.48 mM; Need ultrasonic)

Preparing Stock Solutions	Solvent Concentration	Mass		
		1 mg	5 mg	10 mg
1 mM		2.4727 mL	12.3634 mL	24.7268 mL
5 mM		0.4945 mL	2.4727 mL	4.9454 mL
10 mM		0.2473 mL	1.2363 mL	2.4727 mL

Please refer to the solubility information to select the appropriate solvent.

BIOLOGICAL ACTIVITY

Description

Camptothecin-20(S)-O-propionate (CZ48), the C20-propionate ester of CPT, is a highly effective anticancer agent. Camptothecin-20(S)-O-propionate (CZ48) is a topoisomerase-I inhibitor^{[1][2][3]}.

In Vivo

Camptothecin-20(S)-O-propionate (CZ48, gavage, 100 to 2000 mg/kg/day) exhibits anti-tumor activity in CLO-breast carcinoma (100 mg/kg) and PC3-prostate carcinoma (1000 mg/kg) models in mice^[3].

MCE has not independently confirmed the accuracy of these methods. They are for reference only.

Animal Model:	A tumor xenograft growing in a nude mouse (size, 0.1 cm ³) ^[3] .
Dosage:	100-1000 mg/kg/day.
Administration:	Oral gavage, for 2, 4 and 6 days, respectively.
Result:	Exhibited anti-tumor effect.

REFERENCES

- [1]. Zhisong Cao, et al. Crystalline camptothecin-20(S)-O-propionate hydrate: a novel anticancer agent with strong activity against 19 human tumor xenografts. *Cancer Res.* 2009 Jun 1;69(11):4742-9.
- [2]. Xing Liu, et al. Correlation between the sensitivity of tumors to treatment with CZ48 and local concentrations of the active metabolite CPT within the tumors. *Biomed Rep.* 2013 Mar;1(2):202-206.
-

Caution: Product has not been fully validated for medical applications. For research use only.

Tel: 609-228-6898

Fax: 609-228-5909

E-mail: tech@MedChemExpress.com

Address: 1 Deer Park Dr, Suite Q, Monmouth Junction, NJ 08852, USA